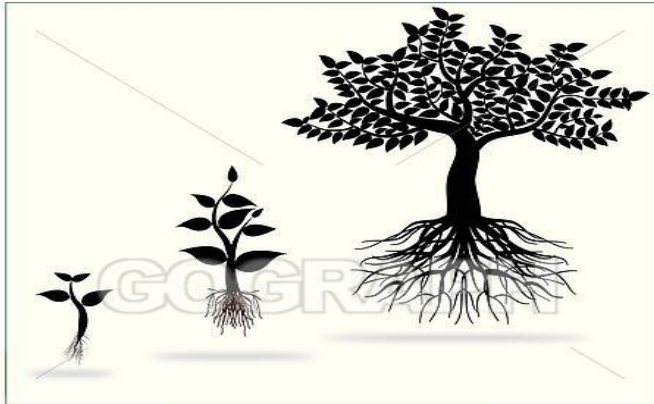


## Happy Earth Day



gg87882763 www.gograph.com

## El Cerrito Community Council Meeting APRIL 21, 2022, 7:00 - 9:00 PM

### PROTECT OUR COMMUNITIES FOUNDATION WILL INTRODUCE SAN DIEGO COMMUNITY POWER

Sonja Robinson and her team from Protect Our Communities Foundation will introduce the new San Diego Community Power (SDCP) is a Community Choice Aggregator (CCA) committed to providing clean, renewable electricity choices at competitive rates and investing in innovative programs that benefit residents, businesses, the environment and the economy in our communities.

Customers are automatically enrolled with SDCP, unless they choose to Opt OUT and stay with San Diego Gas & Electric – see next column.

### WE ARE MEETING VIA ZOOM AT

<https://us02web.zoom.us/j/81759375003?pwd=Szc0WCtZUENYTVhPNW1XMVNUNiZtZz09>

**One tap mobile +16699006833**  
**Join by Phone +1 669 900 6833**

**Meeting ID: 817 5937 5003**  
**Passcode: 127730**

## HOW TO OPT OUT & STAY WITH SDG&E

You have to Opt OUT before 5 days before your May meter read date – so do it as soon as you can if you want to Opt OUT

San Diego Community Power states that Opting Out is simple. It takes a few steps to complete and just minutes of your time – at <https://sdcommunitypower.org/your-choice/opt-out/>

- **1** Complete the Account Information form.
- **2** Select the account you wish to opt out.
- **3** Read and accept our terms and conditions.
- **4** And that's it. You're done!

**Note:** You can cancel anytime during the opting out process or re-enroll at a later date.

## THE COLLEGE AREA SURVEY IS BAD, BUT TAKE IT ANYWAY...

### THE DEADLINE TO COMPLETE THE SURVEY IS MAY 1st at midnight.

#### A link the survey is at the end of this report

From some very diligent El Cerrito Residents -

We've **identified major flaws** with the city's College Area Community Plan Update survey, but we feel it's important to fill it out, regardless.

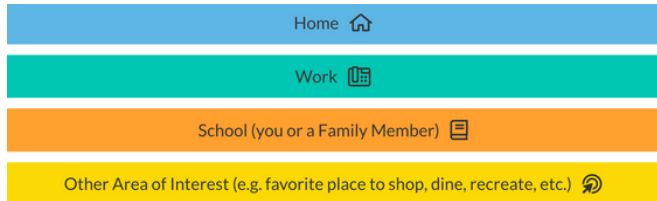
**IF YOU CLICK ON A SURVEY ANSWER, YOU WILL BE FORCED TO LEAVE AN OPTION SELECTED, so please read the following before taking the survey.**

In most cases (but not all) the questions will also include a comment box. We are providing these **Talking Points** which you may find helpful.

Enter your comments into the comment boxes or simply move on to the next page **WITHOUT clicking on one of the Plan Update options if neither supports your vision.**

**NOW, LET'S WALK THROUGH THE SURVEY...**

You will come to this page which you do not have to fill out. You do not have to provide your address, etc.



Next, comes "OVERVIEW OF FOCUS AREAS" with a map of each of the four areas. **They expect you to remember this map, so it is important that you know where each area is when you are responding.**

**Overview of Focus Areas**

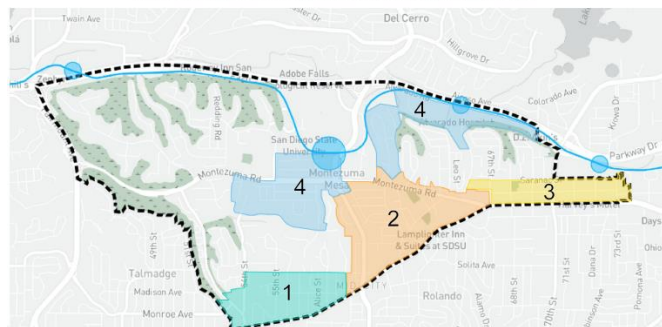
The first step in the development of growth strategies was to identify focus areas, which are primary areas of change within the community. Prior to plan-update kick-off, the College Area Community Council presented the Planning Department with a report that highlighted some of the community priorities for the new plan, including the desire for community identity, new public gathering spaces, a linear park on Montezuma Road, and a preference for new infill development along major streets, at major intersections or high-frequency transit stops, and at major hubs of activity such as SDSU, neighborhood schools and parks, and Alvarado Hospital.

The Planning Department subsequently engaged the community to establish a plan vision statement and strategies for new housing and development that enhances the community and includes diverse housing for a diverse community of students, seniors and families, with a focus on new housing near SDSU and transit corridors.

This community input has resulted in the creation of the following four focus areas highlighted on the map for future growth:

- 1. Boulevard Corner
- 2. Montezuma Triangle
- 3. Boulevard Blocks
- 4. Transit Oriented Campus Village

Click on colored boxes above or the colored areas on the interactive map for more information.



Next, the Survey asks respondents from anywhere in San Diego to pick between two plans that affect College Area neighborhoods:

1. **Grand Boulevards**
2. **15-Minute Neighborhoods**

However, **both plans** would upzone large sections of the College Area's single-family neighborhoods for townhouses and apartment buildings — up to 8-stories tall.

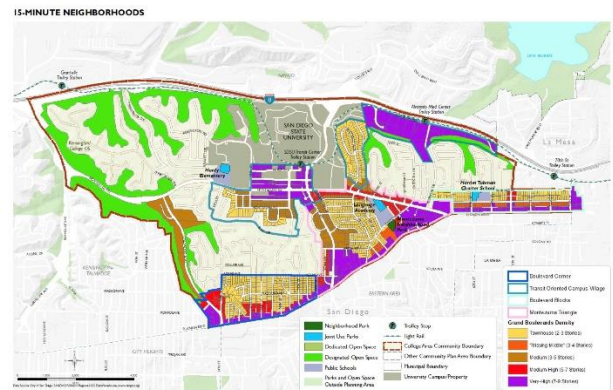
The survey asks you to pick the plan that is "CLOSEST TO YOUR VISION," **but if neither plan is close to your vision, DO NOT SELECT AN OPTION.**

**THIS IS IMPORTANT BECAUSE ONCE SELECTED, THE SURVEY WILL COMMIT YOU TO ONE OF THE**

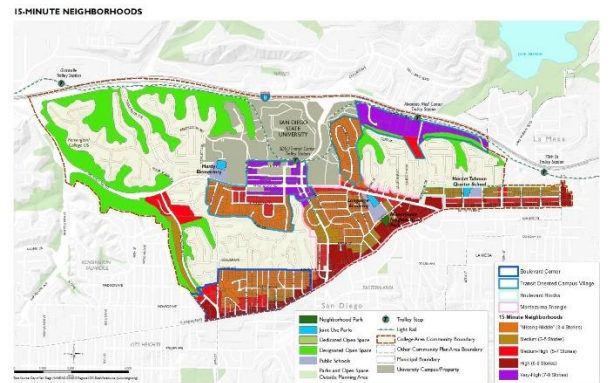
**OPTIONS. So, DO NOT select an option if neither plan is "close to your vision".**

Below are the two plans (ignore the City's typo on the subheading of the "Grand Boulevards" map):

Variation 1: Grand Boulevards



Variation 2: 15-Minute Neighborhoods



The survey then asks you "WHICH LAND USE STRATEGY IS A BETTER APPROACH FOR FUTURE PUBLIC SPACES AND RECREATION IN THE COLLEGE AREA?"

**Again, they only give you the option of picking one plan or the other. You DO NOT have to select an option. Go to the next page if you prefer not to commit to either plan.**

Next, they will take you through the Four Focus Areas and ask you which option you prefer for each one. (These are the maps from earlier.)

**The first is about the "Boulevard Corner Area". You DO NOT have to check an option if you don't like either plan.** You can just enter your comments regarding the Boulevard Corner Area in the comment box.

Follow these same directions for the three remaining Focus Area questions, and enter your corresponding comments for each section — even if you chose not to select an option on each page.

Remember to reference and customize our **Talking Points** if you think they would be helpful.

The last page asks questions about your connection to the College Area, your age, race, and zip code. The purpose of this page is so the City can say their sample is a cross-section of the community, even though anyone can take the survey (regardless of where they live) and submit it as many times as they want. We encourage you to write letters to the following:

Mayor Todd Gloria  
[MayorToddGloria@sandiego.gov](mailto:MayorToddGloria@sandiego.gov)

Council President Sean Elo-Rivera  
[seanelorivera@sandiego.gov](mailto:seanelorivera@sandiego.gov)

Heidi Vonblum  
Planning Department,  
Interim Director  
[vonblumh@sandiego.gov](mailto:vonblumh@sandiego.gov)

Nathen Causman  
Planning Department,  
College Area Community Planner  
[ncausman@sandiego.gov](mailto:ncausman@sandiego.gov)

Shannon Mulderig  
Planning Department,  
College Area Community Planner  
[smulderig@sandiego.gov](mailto:smulderig@sandiego.gov)

Communicate either your support or concerns about these proposed plans, the survey, the planning process, etc. You can use our talking points, but please write your letter in your own words, which will make it more impactful.

Thank you for taking the time to complete the survey and write your letters.

**THE DEADLINE TO COMPLETE THE SURVEY IS MAY 1st at midnight.**

[I'm ready, take me to the survey...](#)

---

## San Diego EarthWorks' 31st Annual EARTHFAIR 2022 – BALBOA PARK Sunday, April 24th--10am-5pm

Exhibitors represent every type of environmental organization, governmental program and commercial enterprise with goods, services and causes that address our environment and quality of life.

You will find traditional conservation organizations, wildlife preservation groups, products made from natural and organically grown crops, organic gardening information, alternative energy vehicles, ecotourism opportunities, many alternative and traditional health care products and services, pet adoption services, clean air and clean water products, rainforest preservation groups ... the list goes on and on.

In the Children's Activity Area find crafts, games, face painting, storytelling, and hands-on activities for children of all ages to educate, entertain and inspire youth, in the spirit of Earth Day. This year's events will include recycling, making gift cards from recycled materials, and learning how to visit wild areas without disturbing the environment.

In the spirit of "Zero Waste," the EarthFair Reuse and Repair Area - on the lawn by the UN Building - is reserved for organizations and businesses that focus on repairing and reusing materials and manufactured items instead consigning them to the landfill. Vendors and demonstrations throughout the day show what you can do, today, to reduce waste, save money, and move us all toward a Zero Waste society.

The eARTh Gallery features works by San Diego artists and craftsmen, using recycled materials, and depictions of "Endangered Spaces" in San Diego County. The artwork will be presented on the lawn area next to Presidents Way and Park Blvd (by our food court, exhibit area 9).

**If you arrive after about 10:30 am, there is often no CAR parking close to the park. [Click here for some alternatives](#) to keep you from being stuck behind traffic on Park Blvd. trying to get into the park to find non-existent parking spaces.**



gg70665683 www.gograph.com

Reminder, it costs the ECCC Board for the website, hosting platform, P.O. Box and other operational needs. We are also hoping to be able to have in person meetings soon.

So we are asking for donations to cover these costs. Donations large or small can be made to the P.O. Box. Even small donations added together make a big difference. We appreciate your support of the ECCC community and the newsletter with your donations.

---

## GENTLE FITNESS CLASSES At Colina Del Sol Rec Center

The San Diego Department of Parks and Recreation is sponsoring a gentle fitness class for seniors. The class is free and is held every Tuesday and Thursday from 11:30 am to 1:00 pm at the Colina Park Recreation Center at 5319 Orange Avenue, San Diego, CA 92105. The skill level is beginner. Ms. Velma is the instructor. Join us in a light fun workout that focuses on being active. The class includes stretching, walking, chair yoga, tai chi, and other aerobic and strength training activities. You can register at

<https://apm.activecommunities.com/sdparcandrec>.



**PLEASE HELP US KEEP SENDING THE NEWSLETTER THROUGH YOUR DONATIONS**

I/we donate \$ to the printing of the El Cerrito Community Council Newsletter.

Name(s) or Company Name (if corporate sponsor):

Address: \_\_\_\_\_ Phone #(s): \_\_\_\_\_

\_\_\_\_\_ DO \_\_\_\_\_ DO NOT print our name(s) in the newsletter.

**Send donation to: ECCC, P.O. Box 151268 ♦ San Diego, CA 92175-1268**

*Your El Cerrito Realtor*

*As Your Neighbor With  
18 Years Experience, I'll  
Get You The Best Price!*



**Stephen Seus**  
619-818-3526  
StephenBSeus@gmail.com  
www.SteveSeus.com  
DRE# 01416127

**BIGBLOCK**  
REALTY

**JOHN & MELISSA STEELE**

Realtors with Big Block Realty BRE#01885775 | CalBRE# 01950588 & 01951324

**TOP 1% OF SAN DIEGO REALTORS**

**RATED 5-STAR IN  
CLIENT EXPERIENCE**



OVER 500 5-STAR REVIEWS ACROSS  
ZILLOW, YELP, FACEBOOK, & GOOGLE



**SteeleSanDiegoHomes.com**

**Team@SteeleSanDiegoHomes.com**

**619-887-4429**



**ALEX KYBAL**  
RE/MAX Pacific  
(858)531-0636  
www.alexkybal.com  
alexkybal@gmail.com

**WHY PAY 6% COMMISSION TO SELL?**

**PAY ONLY 3.50%  
TOTAL COMMISSION.**

*INCLUDES FULL SERVICE!*

**NO HIDDEN FEES. NO HASSLE.  
SAVE THOUSANDS.**

**RE/MAX**  
Outstanding Agents  
Outstanding Results®

*Experience. Integrity. Results.* • 5-STAR Reviews • DRE#01388372

*Come By & Enjoy Yourself!  
Families Welcome!*



**5540 EL CAJON BLVD**  
**NOW OPEN FOR PICK UP, PATIO  
AND IN-DOOR DINING**